

# Endpoint Management™ with Landmark™ Patterns



 **TOPCON**<sup>®</sup>  
CONNECTING VISIONS

# ENDPOINT MANAGEMENT THE NEW SUB THRESHOLD TREATMENT OPTION FOR PASCAL

New for PASCAL and Streamline lasers, Endpoint Management sharpens titration with fine gradation of laser output providing further precision in setting visible or non-visible endpoints within the retina.

When applying Landmark Patterns, reference points (landmarks) offer feedback on proper dosage, treatment location and positioning of the laser.

## The benefits for physicians and patients are considerable

### More options

Endpoint Management provides more physician treatment options than ever before. More precise titration ability with fine gradation of laser output and tissue sparing sub-threshold treatment options are among the benefits of this new software upgrade.

### More feedback

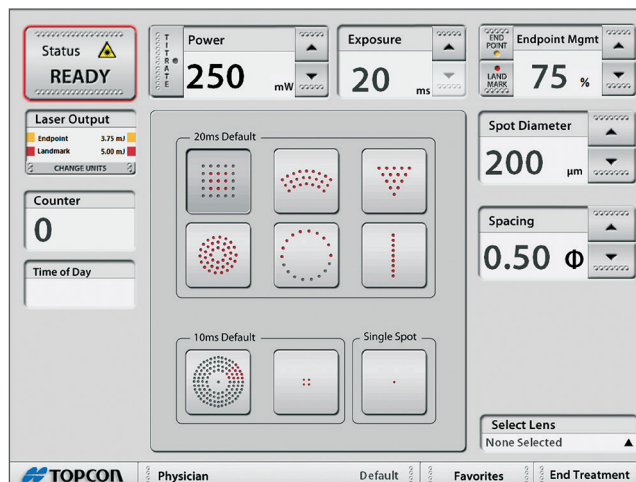
Know where you have treated. Landmark delivers greater treatment options by providing reference points, marked advantage over other sub-visible laser application technologies.

### More control

Endpoint Management offers ultra-fine control by enabling greater precision and repeatability with laser settings, providing the ability to set exacting laser endpoints. Endpoint Management algorithms gives absolute control over laser dosage.

### Less complexity

Simply titrate to the desired visible endpoint and set the Endpoint Management percentage. Automated algorithms choose the best parameters for laser output, which simplifies the process by providing simple controls.



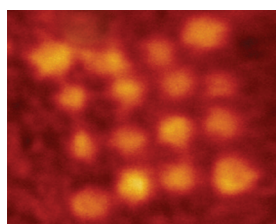
### Less tissue damage

Physicians will achieve optimal results by setting the desired endpoint as a reference for the remainder of the treatment. Even if the laser pulse is sub-visible, reference markers ensure proper output is being provided.

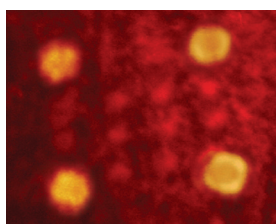
### Less uncertainty

Endpoint Management offers a level of accuracy no other sub-visible laser application can match. This unique system offers simplicity of control to achieve and track the desired endpoint throughout the procedure.

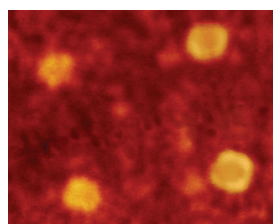
By enabling a higher level of precision and repeatability, Endpoint Management algorithms give the physician more control over laser dosage. The result is faster treatments, no visible burns and more refined reference points, providing an increased advantage over other sub-visible laser application technologies.



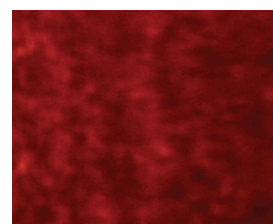
Endpoint Management (EM) Off



EM with Landmarks: High %



EM with Landmarks: Low %



Endpoint Management Only

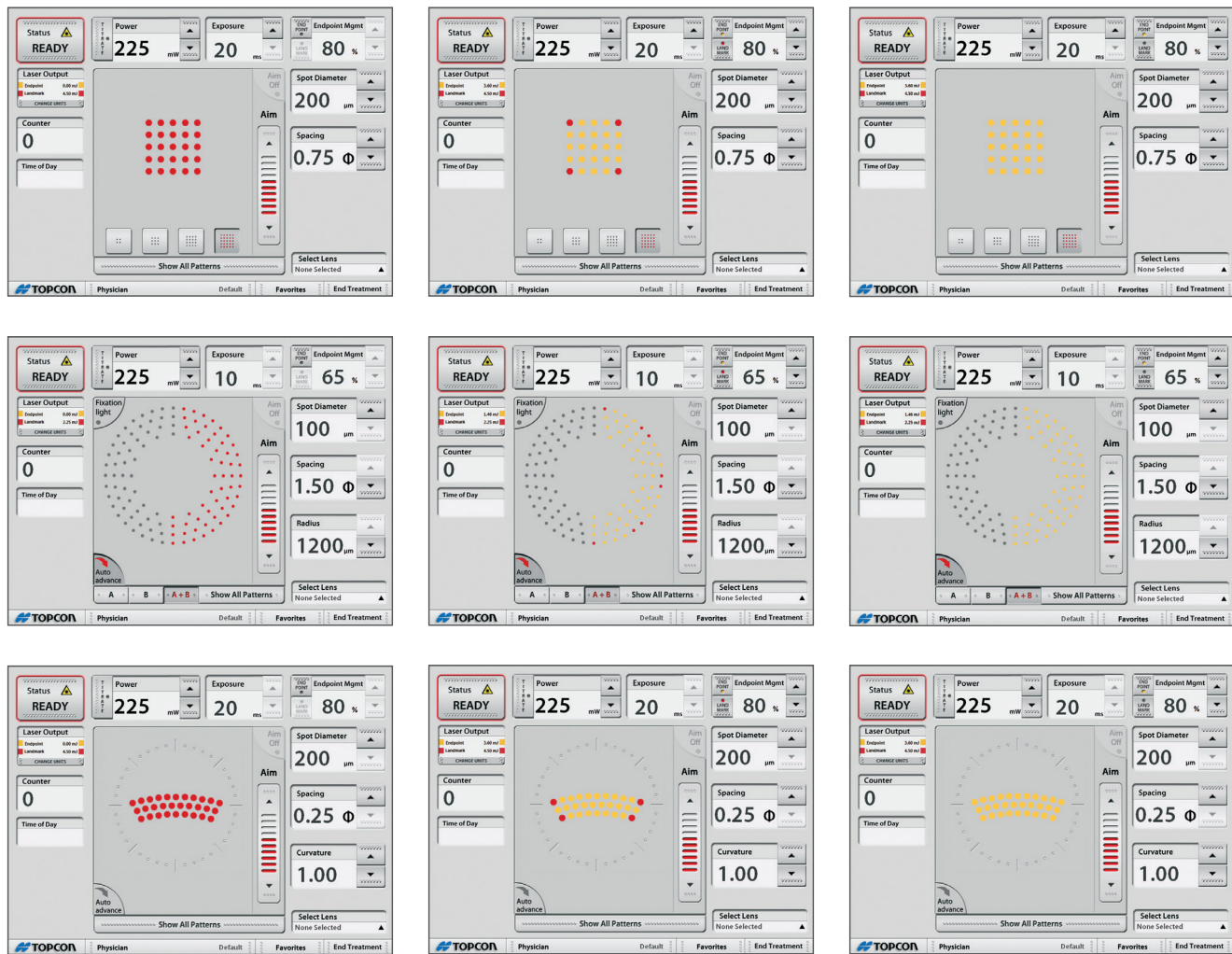


# ENDPOINT MANAGEMENT ADVANTAGES

## Know your thresholds

Only Landmark can give the physician full control and visibility of laser delivery by simply setting the desired endpoint and tracking it during the treatment.

Landmark patterns with Endpoint Management software provide accurate feedback with visible markers. Physicians now have full control between therapeutic boundaries and energy application.



Endpoint Management Off

Endpoint with Landmarks On

Endpoint Only

## Freedom of treatment options

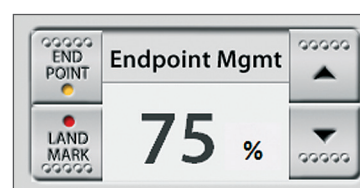
For conventional treatments, use the PASCAL laser as before with Endpoint Management turned off. Enter new areas of control with new abilities that are discretionary. Then simply decide the best treatment course by turning Landmark capabilities on or off as required.

## Improved patient comfort

Shorter pulses contribute to a reduction in the pain a patient may feel during treatment. Endpoint Management further improves this by controlling and reducing both time and power being delivered. Even the patterns themselves are designed to improve comfort by delivering the Landmark reference points last, as these have the highest output.

## Reduction in dosing

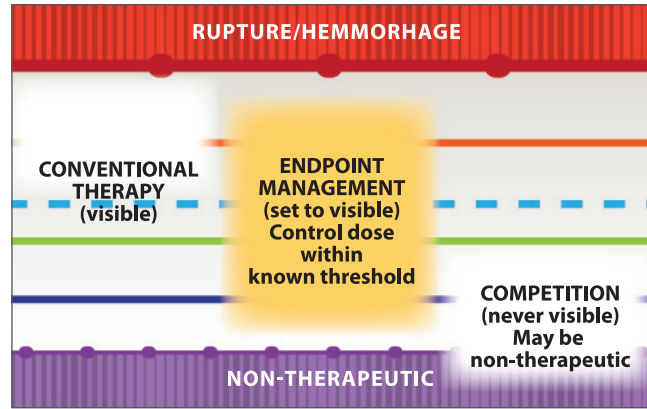
Endpoint Management shows percentage of set values of the titrated level. Reduce output to lower percentages for sub-visible laser applications.



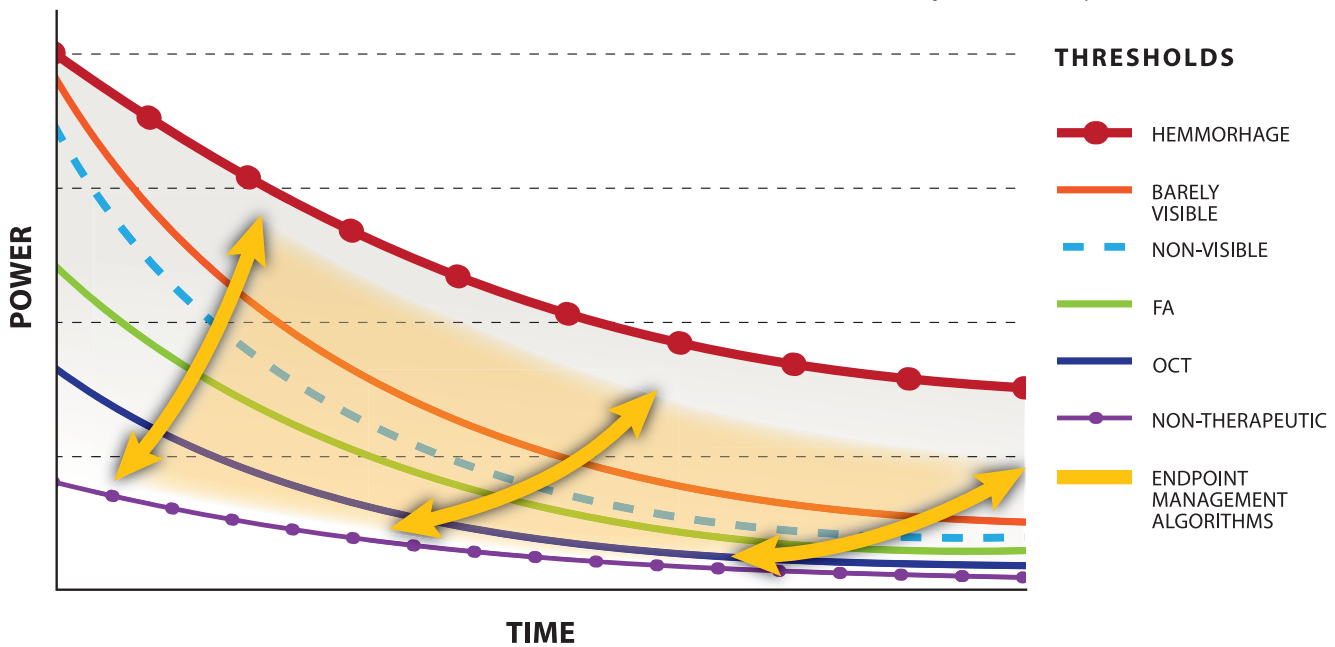
Easy to use interface gives precise control over visible endpoint percentage

## Endpoint Management is mathematically precise

The Arrhenius Integral coupled with research and data on laser-tissue interactions create the algorithms that are applied with Endpoint Management software. By use of this formula, changes induced in tissues by heating are accounted for during a laser treatment. Since the treatment is actually dependent on both temperature and the time over which laser is applied, Endpoint Management modulates power and duration simultaneously. Physicians can adjust the level of laser intensity providing a linear control over an inherently nonlinear process.



Conventional laser therapy has always provided a visible endpoint. Endpoint Management utilizes this approach to establish a baseline using conventional means, then applies advanced algorithms to deliver sub-visible laser applications that stay within therapeutic boundaries. With other non-visible treatment technologies that do not establish a baseline, treatments may be non-therapeutic.



Endpoint Management algorithms adjust power and duration simultaneously, maximizing the ability to safely and accurately control the desired endpoints.

Endpoint Management is an optional accessory for PASCAL, Streamline and Streamline 577 laser systems.

Contact your local Topcon representative for information about system upgrade requirements.

### IMPORTANT

Subject to change in design and/or specifications without advanced notice.

In order to obtain the best results with this instrument, please be sure to review all user instructions prior to operation.

**Topcon Europe Medical B.V.**  
Essebaan 11; 2908 LJ Capelle a/d IJssel; P.O. Box 145;  
2900 AC Capelle a/d IJssel; The Netherlands  
Phone: +31-(0)10-4585077; Fax: +31-(0)10-4585045  
E-mail: medical@topcon.eu; www.topcon-medical.eu

**Topcon España S.A.**  
HEAD OFFICE: Frederic Mompou, 4;  
08960 Sant Just Desvern; Barcelona, Spain  
Phone: +34-93-4734057; Fax: +34-93-4733932  
E-mail: medica@topcon.es; www.topcon.es

**Topcon Deutschland GmbH**  
Hanns-Martin-Schleyer Strasse 41;  
D-47877 Willich, Germany  
Phone: (+49) 2154-885-0; Fax: (+49) 2154-885-177  
E-mail: info@topcon-medical.de; www.topcon-medical.de

**Topcon Ireland**  
Unit 276, Blanchardstown; Corporate Park 2  
Ballycoolin; Dublin 15, Ireland  
Phone: +353-18975900; Fax: +353-18293915  
E-mail: medical@topcon.ie; www.topcon.ie

**Topcon Danmark**  
Praestemarksvej 25; 4000 Roskilde, Danmark  
Phone: +45-46-327500; Fax: +45-46-327555  
E-mail: info@topcon.dk  
www.topcon.dk

**Topcon Italy**  
Viale dell'Industria 60;  
20037 Paderno Dugnano, (MI) Italy  
Phone: +39-02-9186671; Fax: +39-02-91081091  
E-mail: info@topcon.it; www.topcon.it

**Topcon Polska Sp. z o.o.**  
ul. Warszawska 23; 42-470 Siewierz; Poland  
Phone: +48-(0)32-670-50-45; Fax: +48-(0)32-671-34-05  
www.topcon-polska.pl

**Topcon Scandinavia A.B.**  
Neongatan 2; P.O. Box 25; 43151 Mölndal, Sweden  
Phone: +46-(0)31-7109200; Fax: +46-(0)31-7109249  
E-mail: medical@topcon.se; www.topcon.se

**Topcon France**  
BAT A1; 3 route de la révolte, 93206 Saint Denis Cedex  
Phone: +33-(0)1-49212323; Fax: +33-(0)1-49212324  
E-mail: topcon@topcon.fr; www.topcon-medical.fr

**Topcon (Great Britain) Ltd.**  
Topcon House; Kennet Side; Bone Lane; Newbury  
Berkshire RG14 5PX; United Kingdom  
Phone: +44-(0)1635-551120; Fax: +44-(0)1635-551170  
E-mail: medical@topcon.co.uk; www.topcon.co.uk



### TOPCON CORPORATION

75-1 Hasunuma-cho, Itabashi-ku, Tokyo 174-8580, Japan.  
Phone: 3-3558-2523/2522. Fax: 3-3960-4214. www.topcon.co.jp